

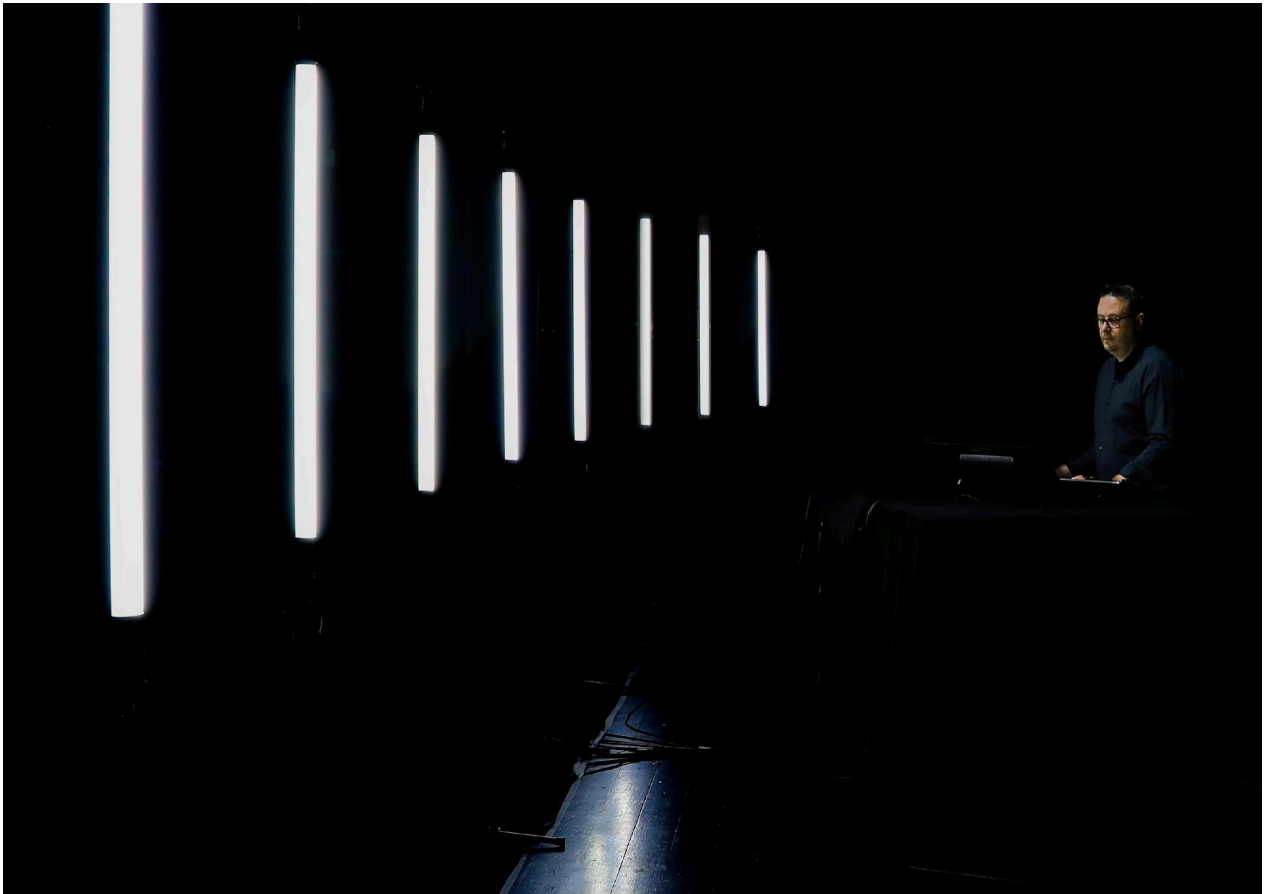
# Des Éclairs (Lightnings)

By Hervé Birolini

## Technical Rider

Solo piece for 8 LED tubes, electrical arcs and live electronics.  
Duration : 35 – 40 '

**Notice :** This work is not recommended for people with electro-sensitivity, epilepsy and equipped with a "pacemaker".



**Reception conditions :**

2 people on tour / Day-1, End stage  
Performer : Hervé Birolini

**Technical Contact :**

Floxed Barbelin / +336 81 60 02 98  
Floxed.barbelin@laposte.net

## Stage :

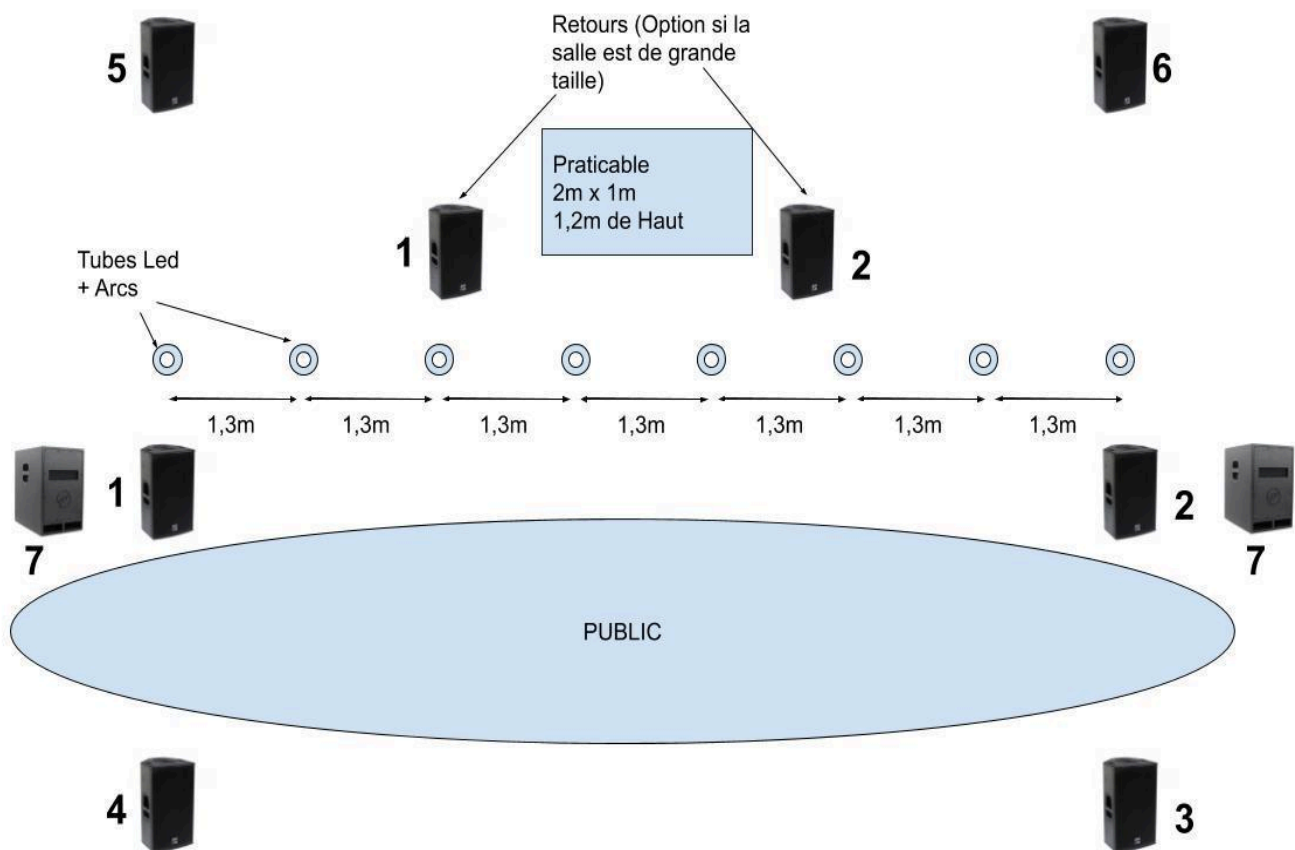
Width : 10m (33 ft)mini  
Depth 5m (16 ft)mini  
Height 3,5m (12 ft) mini  
Black Box, and black marley on stage  
Germans curtains or curtain legs.

## Accessories :

1 riser 2x1m (or 3x6 ft) with black leg, 1m (3ft) high

## Sound :

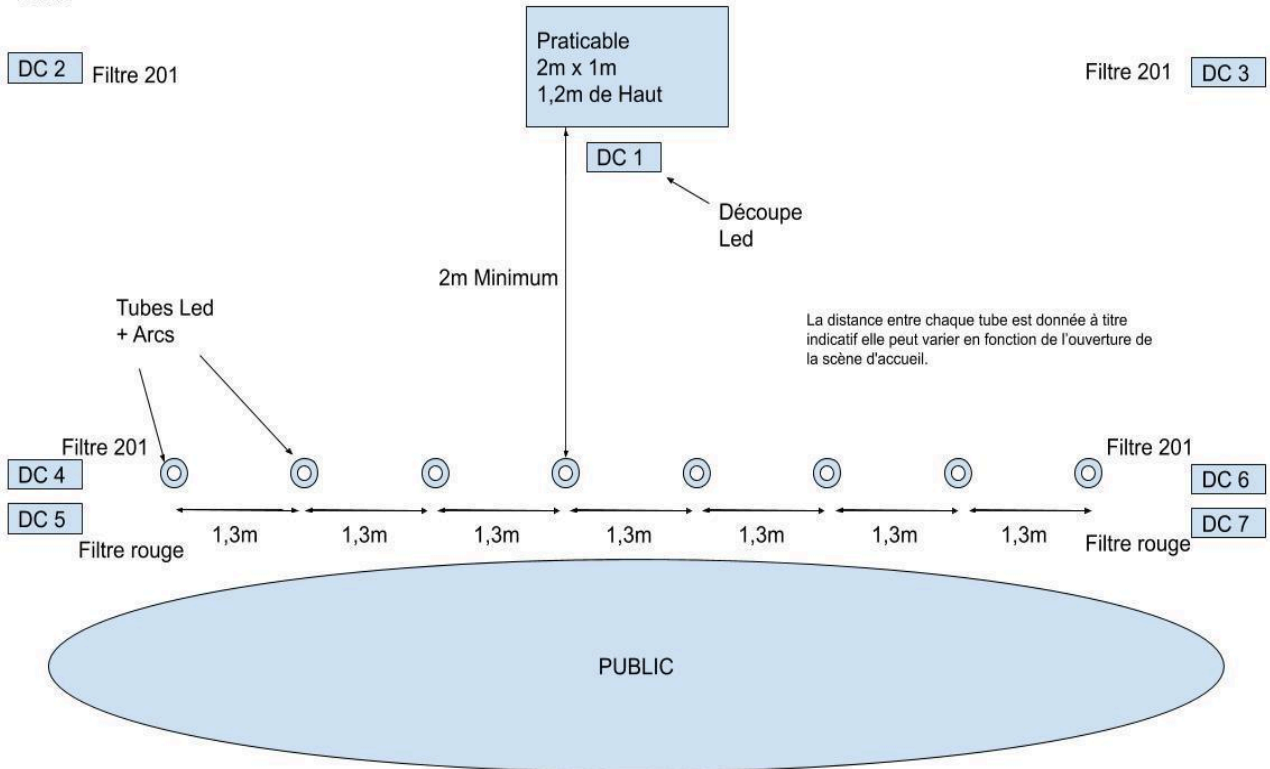
6 loudspeakers type Nexo PS15 with stands  
2 monitors if the place is large  
2 Subwoofer  
Amplification with 7 independant lines  
8 lines to connect near the riser from the arcs (XLR)



## Lighting :

7 Profiles 1kw (5 with Lee 201 and 2 with Lee 164)  
 Public Lighting drive in DMX  
 4 light stands  
 DMX connection near the riser on the stage (3 pins)

Découpe DC 1 : Découpe Led  
 Découpes DC 2 à 7 : type 614 Robert  
 Juliat



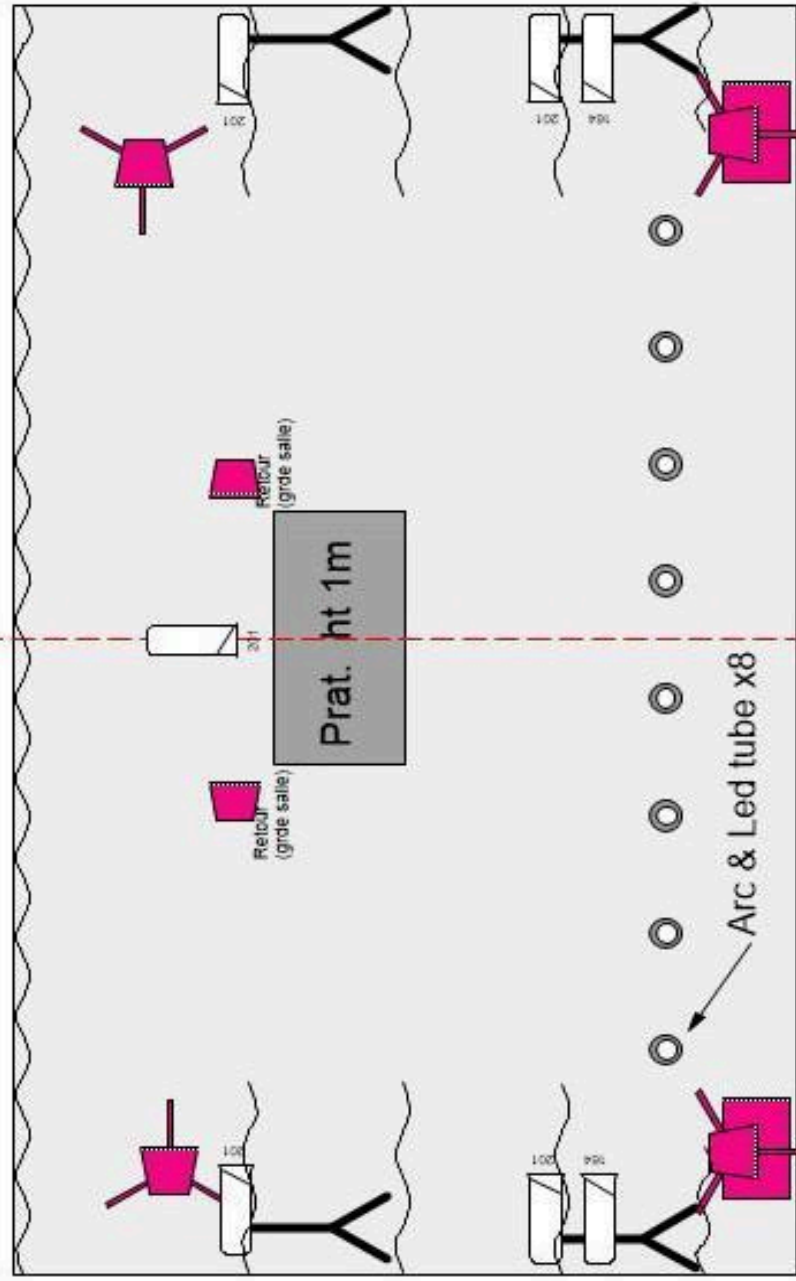
## Staff :

1 multi-skilled technician (sound & light) for the day.

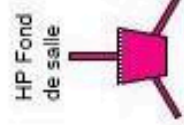
## Planning :

Morning	Set-up (Light and Sound)
Afternoon	Sound check
Evening	Show

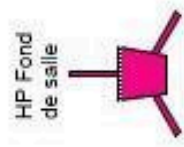
**Teaser :** <https://vimeo.com/452518362/a1daa9a0a0>



- 7 Dec 1kW
- 4 pieds proj standard
- Ø (ou 8) HP 12 or 15"
- sur Pieds
- 2 Subwoofer
- sur 7 lignes séparées



<b>Des Eclairs</b>	<b>Cie Distorsions</b>
	Implantation Type
éch : 1/50	



Julienne Lohmeyer  
06 77 42 55 56 + jlohy@leec.fr